

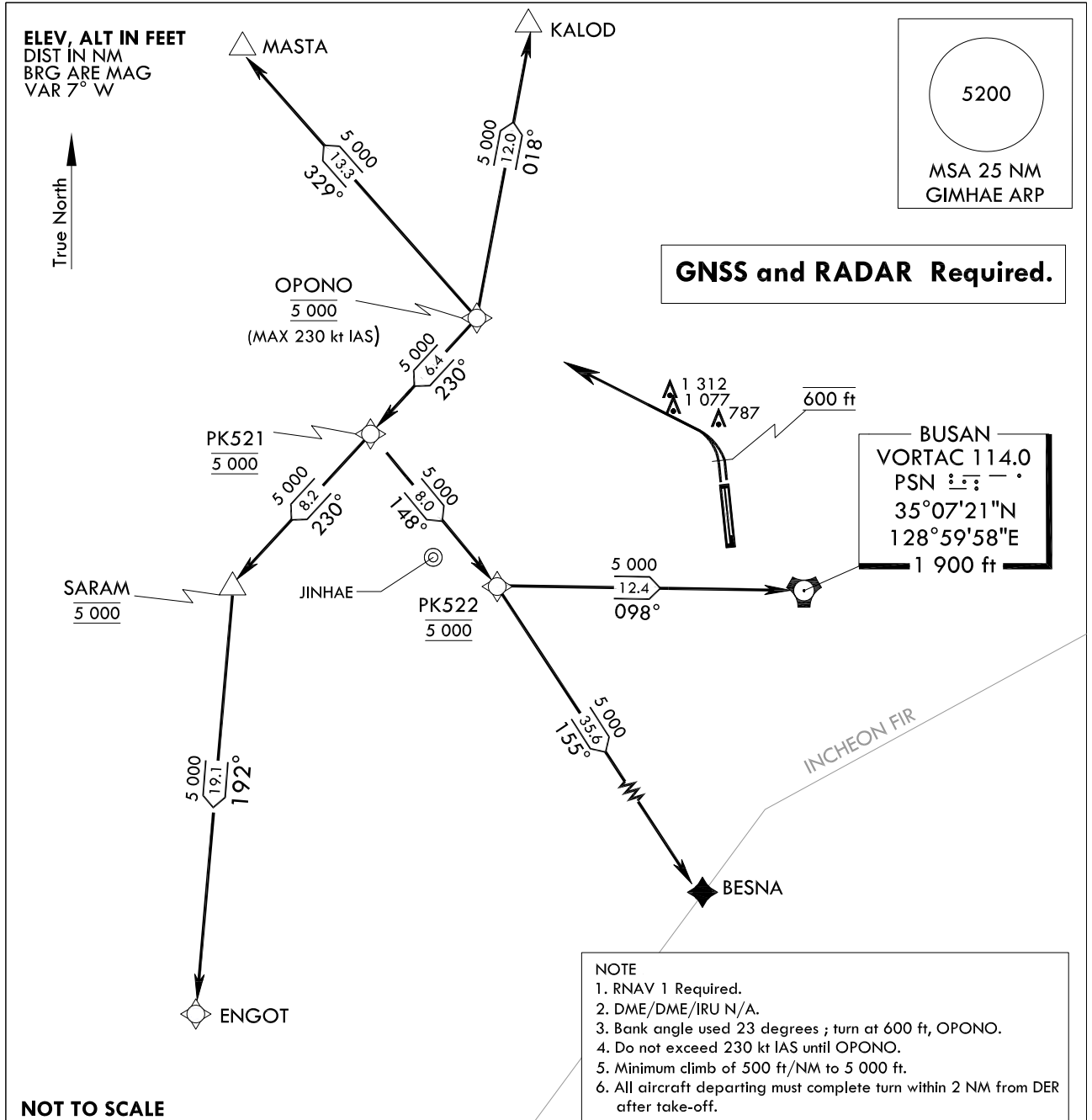
**STANDARD DEPARTURE  
CHART - INSTRUMENT(SID)**

TRANSITION ALT 14 000  
TRANSITION LVL FL 140

GIMHAE DEP 125.5  
363.8  
GIMHAE TWR 118.1  
118.450

**BUSAN/Gimhae Intl(RKPK)**  
**RWY 36L/R**  
**RNAV(GNSS) OPONO 3**

Note : Departure under U.S. TERPS.



**DEPARTURE PROCEDURE DESCRIPTION**

**OPONO 3 DEPARTURE**

TAKE-OFF RWY 36L/R : Climb HDG 001° to 600 ft then direct to cross OPONO at 5 000 ft, thence.....  
..... via (TRANSITIONS routes) and climb assigned altitude by ATC.

**KALOD transition** : From OPONO on track 018° to KALOD.  
**MASTA transition** : From OPONO on track 329° to MASTA.  
**ENGOT transition** : From OPONO on track 230° to cross PK521 at 5 000 ft,  
then on track 230° to cross SARAM at 5 000 ft, then on track 192° to ENGOT.  
**BESNA transition** : From OPONO on track 230° to cross PK521 at 5 000 ft,  
then on track 148° to cross PK522 at 5 000 ft, then on track 155° to BESNA.  
**BUSAN(PSN) transition** : From OPONO on track 230° to cross PK521 at 5 000 ft,  
then on track 148° to cross PK522 at 5 000 ft, then on track 098° to BUSAN(PSN).

Change : Information of standard instrument departure procedure for RWY 36L/R(OPONO 2 → OPONO 3).

BUSAN/Gimhae INTL(RKPK)  
RWY 36L/R  
RNAV(GNSS) OPONO 3

## AERONAUTICAL DATA TABULATION

## Standard Instrument Departure Procedure Coding Tables

## Departure Route - RWY 36R

Serial Number	Path Descriptor	Waypoint Identifier	Fly-over	Course/Track °M(°T)	Distance (NM)	Turn direction	Altitude (ft)	Speed (kt)	Coordinates	VPA/ TCH	Navigation specification	Remarks
001	-	RWY 18L	-	-	-	-	-	-	35°11'38.60"N 128°56'14.73"E	-	RNAV 1	DER
002	VA	-	-	001.42(353.95)	-	-	@600	-230	-	-	RNAV 1	CG 500 ft/NM to 5 000 ft
003	DF	OPONO	-	-	-	-	@5 000	-230	35°18'24.2"N 128°43'46.2"E	-	RNAV 1	-

## Departure Route - RWY 36L

Serial Number	Path Descriptor	Waypoint Identifier	Fly-over	Course/Track °M(°T)	Distance (NM)	Turn direction	Altitude (ft)	Speed (kt)	Coordinates	VPA/ TCH	Navigation specification	Remarks
001	-	RWY 18R	-	-	-	-	-	-	35°11'37.94"N 128°56'06.46"E	-	RNAV 1	DER
002	VA	-	-	001.42(353.95)	-	-	@600	-230	-	-	RNAV 1	CG 500 ft/NM to 5 000 ft
003	DF	OPONO	-	-	-	-	@5 000	-230	35°18'24.2"N 128°43'46.2"E	-	RNAV 1	-

## RNAV OPONO 3 - BUSAN(PNSN VORTAC) Transition

Serial Number	Path Descriptor	Waypoint Identifier	Fly-over	Course/Track °M(°T)	Distance (NM)	Turn direction	Altitude (ft)	Speed (kt)	Coordinates	VPA/ TCH	Navigation specification	Remarks
001	TF	PK521	-	229.87(222.40)	6.36	-	@5 000	-	35°13'42.0"N 128°38'32.2"E	-	RNAV 1	-
002	TF	PK522	-	147.69(140.22)	8.04	-	@5 000	-	35°07'30.3"N 128°44'48.6"E	-	RNAV 1	-
003	TF	PSN	-	098.07(090.60)	12.44	-	+5 000	-	35°07'21.5"N 128°59'58.5"E	-	RNAV 1	PSN VORTAC

## RNAV OPONO 3 - BESNA Transition

Serial Number	Path Descriptor	Waypoint Identifier	Fly-over	Course/Track °M(°T)	Distance (NM)	Turn direction	Altitude (ft)	Speed (kt)	Coordinates	VPA/ TCH	Navigation specification	Remarks
001	TF	PK521	-	229.87(222.40)	6.36	-	@5 000	-	35°13'42.0"N 128°38'32.2"E	-	RNAV 1	-
002	TF	PK522	-	147.69(140.22)	8.04	-	@5 000	-	35°07'30.3"N 128°44'48.6"E	-	RNAV 1	-
003	TF	BESNA	-	155.20(147.73)	35.62	-	+5 000	-	34°37'18.0"N 129°07'51.0"E	-	RNAV 1	-

## RNAV OPONO 3 - ENGOT Transition

Serial Number	Path Descriptor	Waypoint Identifier	Fly-over	Course/Track °M(°T)	Distance (NM)	Turn direction	Altitude (ft)	Speed (kt)	Coordinates	VPA/ TCH	Navigation specification	Remarks
001	TF	PK521	-	229.87(222.40)	6.36	-	@5 000	-	35°13'42.0"N 128°38'32.2"E	-	RNAV 1	-
002	TF	SARAM	-	229.82(222.35)	8.23	-	@5 000	-	35°07'36.3"N 128°31'46.7"E	-	RNAV 1	-
003	TF	ENGOT	-	192.21(184.75)	19.06	-	+5 000	-	34°48'34.48"N 128°29'51.68"E	-	RNAV 1	-

## RNAV OPONO 3 - MASTA Transition

Serial Number	Path Descriptor	Waypoint Identifier	Fly-over	Course/Track °M(°T)	Distance (NM)	Turn direction	Altitude (ft)	Speed (kt)	Coordinates	VPA/ TCH	Navigation specification	Remarks
001	TF	MASTA	-	328.96(321.49)	13.25	-	+5 000	-	35°28'47.0"N 128°33'40.0"E	-	RNAV 1	-

## RNAV OPONO 3 - KALOD Transition

Serial Number	Path Descriptor	Waypoint Identifier	Fly-over	Course/Track °M(°T)	Distance (NM)	Turn direction	Altitude (ft)	Speed (kt)	Coordinates	VPA/ TCH	Navigation specification	Remarks
001	TF	KALOD	-	017.96(010.49)	11.98	-	+5 000	-	35°30'12.1"N 128°46'26.5"E	-	RNAV 1	-

Change : Information of procedure name(OPONO 2 → OPONO 3) and transition route(TOPAX → ENGOT).

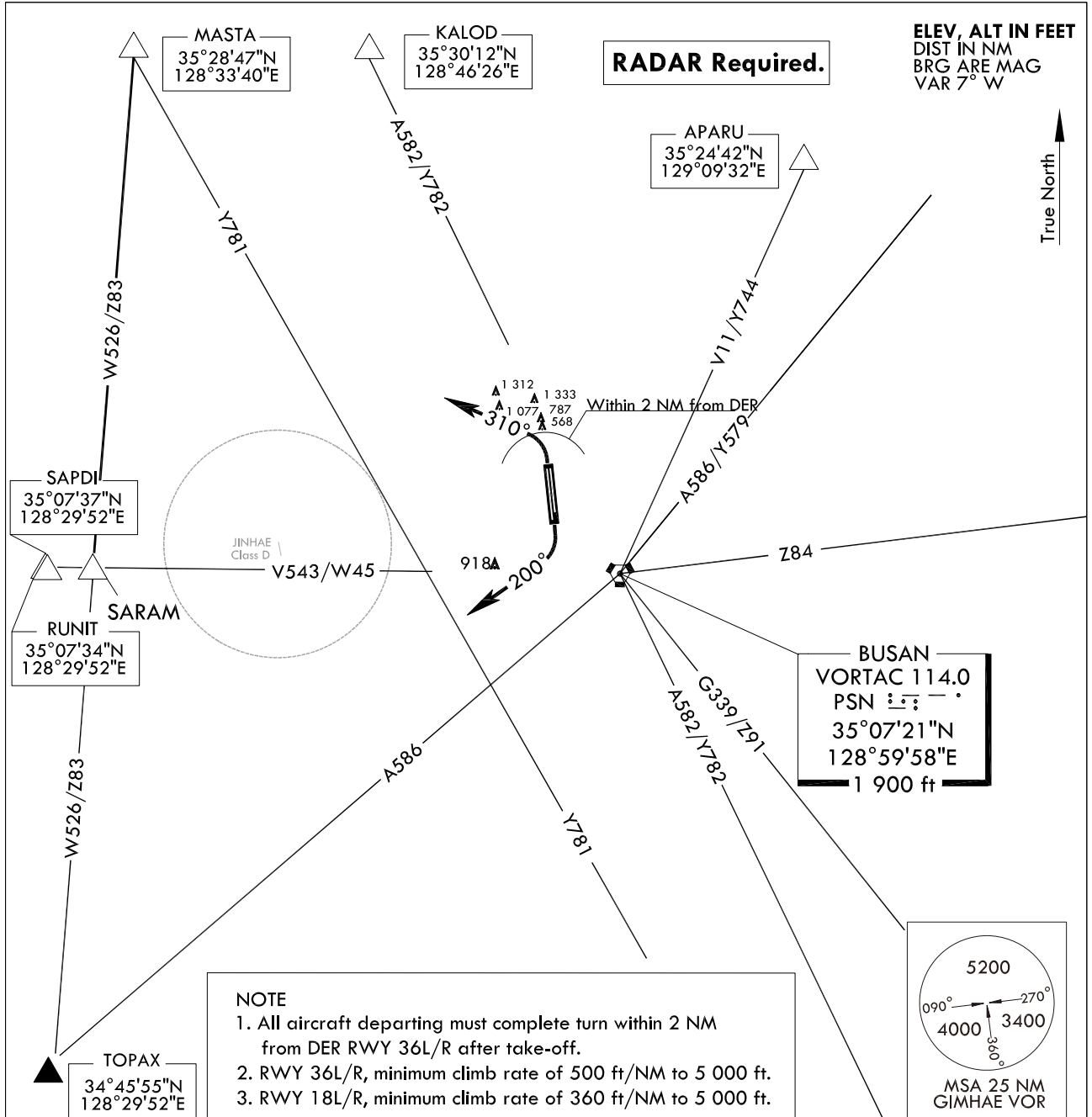
**STANDARD DEPARTURE  
CHART - INSTRUMENT(SID)**

TRANSITION ALT 14 000  
TRANSITION LVL FL 140

GIMHAE DEP 125.5  
363.8  
GIMHAE TWR 118.1  
118.450

**BUSAN/Gimhae Intl(RKPK)**  
**RWY 36L/R**  
**RWY 18L/R**  
**GIMHAE 2**

Note : Departure under U.S. TERPS.



**DEPARTURE ROUTE DESCRIPTION**

**GIMHAE 2 DEPARTURE**

RWY 36L/R : Climb left turn HDG 310°, Thence.....

RWY 18L/R : Climb right turn HDG 200°, Thence.....

.....Expect radar vectors to intercept filed Enroute fix or Navaid.

Maintain 5 000 ft or assigned altitude (flight level).

Expect filed altitude/flight level 10 minutes after departure.

**LOST COMMUNICATIONS** : If radio contact is not established with departure control prior to reaching 5 000 ft, continue climb to 8 000 ft before turning to filed fix/Navaid and proceed filed route and altitude.

Change : Withdrawal of Y579.

**INTENTIONALLY**

**LEFT**

**BLANK**

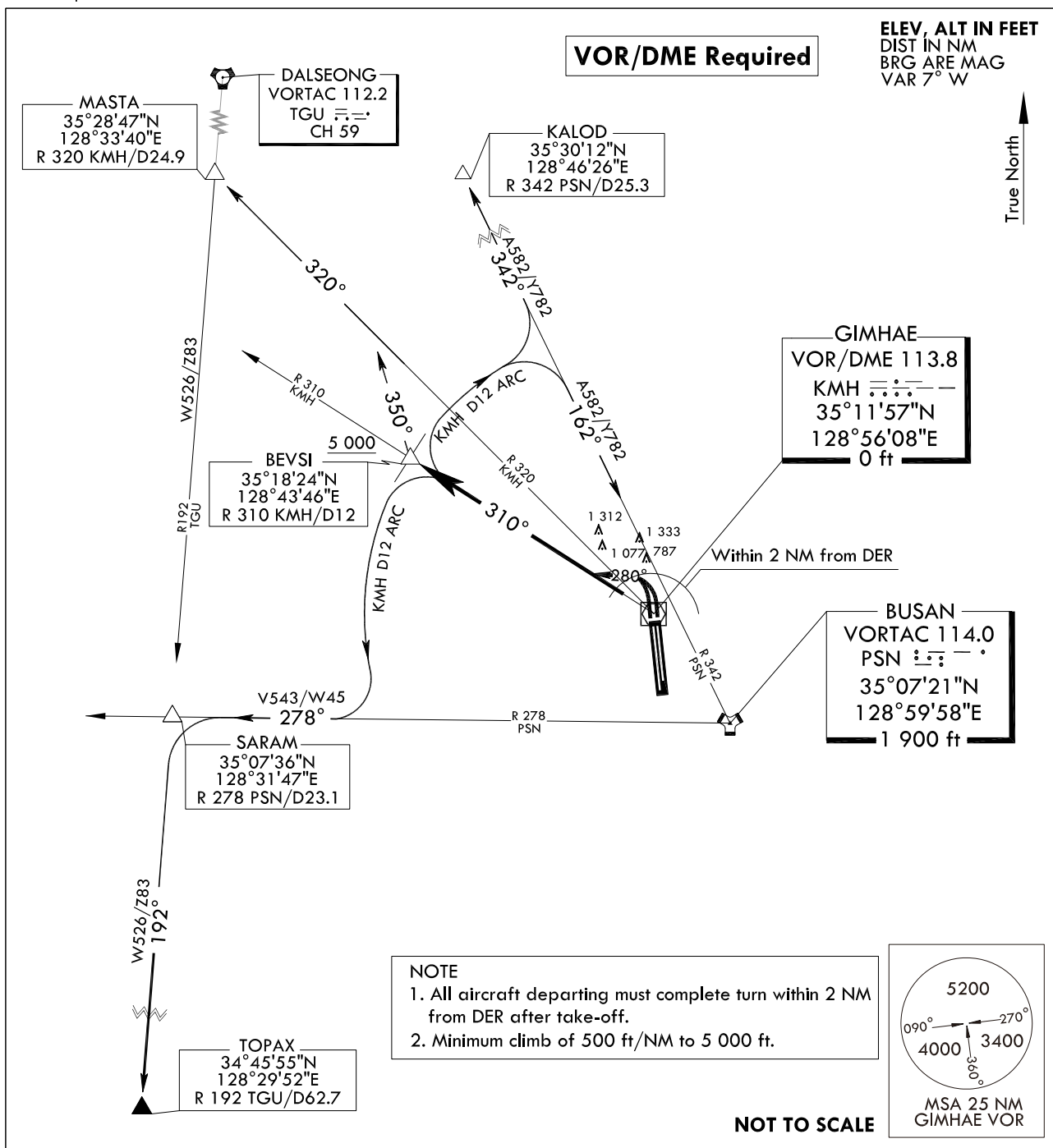
**STANDARD DEPARTURE  
CHART - INSTRUMENT(SID)**

TRANSITION ALT 14 000  
TRANSITION LVL FL 140

GIMHAE DEP 125.5  
363.8  
GIMHAE TWR 118.1  
118.450

**BUSAN/Gimhae Intl(RKPK)**  
**RWY 36L/R**  
**BEVSI 3**

Note : Departure under U.S. TERPS.



**DEPARTURE ROUTE DESCRIPTION**

**BEVSI 3 DEPARTURE**

**RUNWAY 36L/R :** Climbing left turn HDG 280° to intercept R 310 KMH and R 310 KMH to cross BEVSI at or above 5 000 ft. thence.....  
.....via (TRANSITIONS), climb assigned altitude or as directed by ATC.

**KALOD Transition :** Right turn and proceed via KMH D12 arc to R 342 PSN, then via R 342 PSN to KALOD.

**BUSAN(PSN) Transition :** Right turn and proceed via KMH D12 arc to R 342 PSN, then via R 342 PSN to PSN.

**MASTA Transition :** Right turn HDG 350° to R 320 KMH , then via R 320 KMH to MASTA.

**TOPAX Transition :** Left turn and proceed via KMH D12 arc to R 278 PSN, then via R 278 PSN to SARAM, then left turn via R 192 TGU to TOPAX.

Change : Establishment of dalseong VORTAC.

**INTENTIONALLY**

**LEFT**

**BLANK**

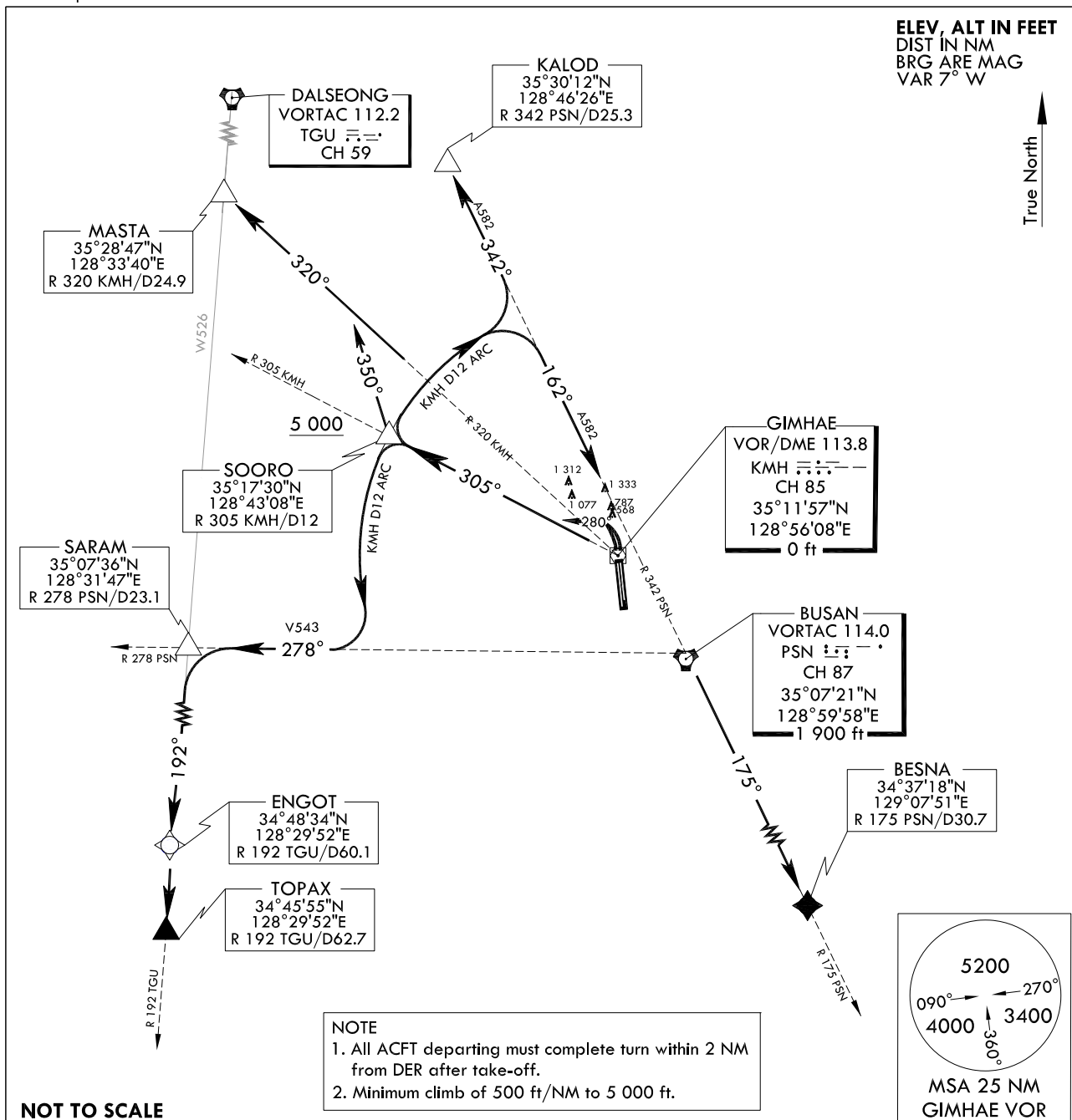
**STANDARD DEPARTURE  
CHART - INSTRUMENT(SID)**

TRANSITION ALT 14 000  
TRANSITION LVL FL 140

GIMHAE DEP	125.5
GIMHAE TWR	363.8
	118.1
	118.450

**BUSAN/Gimhae Intl(RKPK)**  
**RWY 36L/R**  
**SOORO 2**

Note : Departure under U.S. TERPS.



**DEPARTURE ROUTE DESCRIPTION**

**SOORO 2 DEPARTURE**

**TAKE-OFF RUNWAY 36L/R :** Climbing left turn as soon as practicable HDG 280° to intercept R 305 KMH and R 305 KMH to cross SOORO at or above 5 000 ft. thence.....  
.....via (TRANSITIONS), climb assigned altitude or as directed by ATC.

**KALOD Transition :** Right turn and proceed via KMH D12 arc to R 342 PSN, then via R 342 PSN to KALOD.

**BUSAN(PSN) Transition :** Right turn and proceed via KMH D12 arc to R 342 PSN, then via R 342 PSN to PSN.

**MASTA Transition :** Right turn HDG 350° to R 320 KMH , then R 320 KMH to MASTA.

**TOPAX Transition :** Left turn and proceed via KMH D12 arc to R 278 PSN,  
then via R 278 PSN to SARAM, then left turn via R 192 TGU to TOPAX.

**BESNA Transition :** Right turn and proceed via KMH D12 arc to R 342 PSN,  
then via R 342 PSN to PSN, then via R 175 PSN to BESNA.

**ENGOT Transition :** Left turn and proceed via KMH D12 arc to R 278 PSN,  
then via R 278 PSN to SARAM, then left turn via R192 TGU to ENGOT.

Change : Withdrawal of NOTE 3.

**INTENTIONALLY**

**LEFT**

**BLANK**



**STANDARD DEPARTURE  
CHART - INSTRUMENT(SID)**

TRANSITION	ALT	14 000
TRANSITION	LVL	FL 140

GIMHAE DEP	125.5
	363.8
GIMHAE TWR	118.1
	118.450

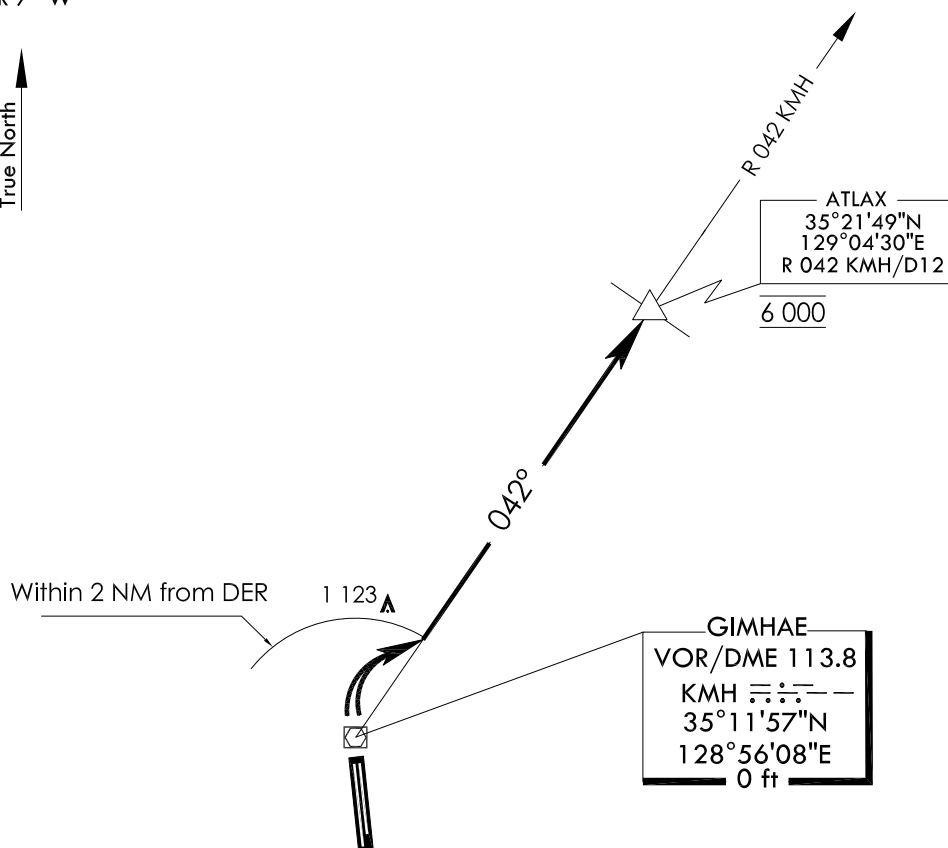
**BUSAN/Gimhae Intl(RKPK)**  
**RWY 36L/R**  
**ATLAX 2**

Note : Departure under U.S. TERPS.

ELEV, ALT IN FEET  
DIST IN NM  
BRG ARE MAG  
VAR 7° W

**VOR/DME and RADAR Required.**

True North



**NOTE**

1. All aircraft departing must complete turn within 2 NM from DER after take-off.
2. Do not exceed 240 kt IAS below 6 000 ft.
3. Minimum climb of 500 ft/NM to 6 000 ft.

**NOT TO SCALE**

**DEPARTURE PROCEDURE DESCRIPTION**

**ATLAX 2 DEPARTURE**

RUNWAY 36L/R : Climbing right turn to intercept R 042 KMH  
and climb to 6 000 ft on R 042 KMH to ATLAX,  
then expect RADAR vector to assigned route and fix.

Change : Information of procedure and fix name(LEEMA → ATLAX).

**INTENTIONALLY**

**LEFT**

**BLANK**

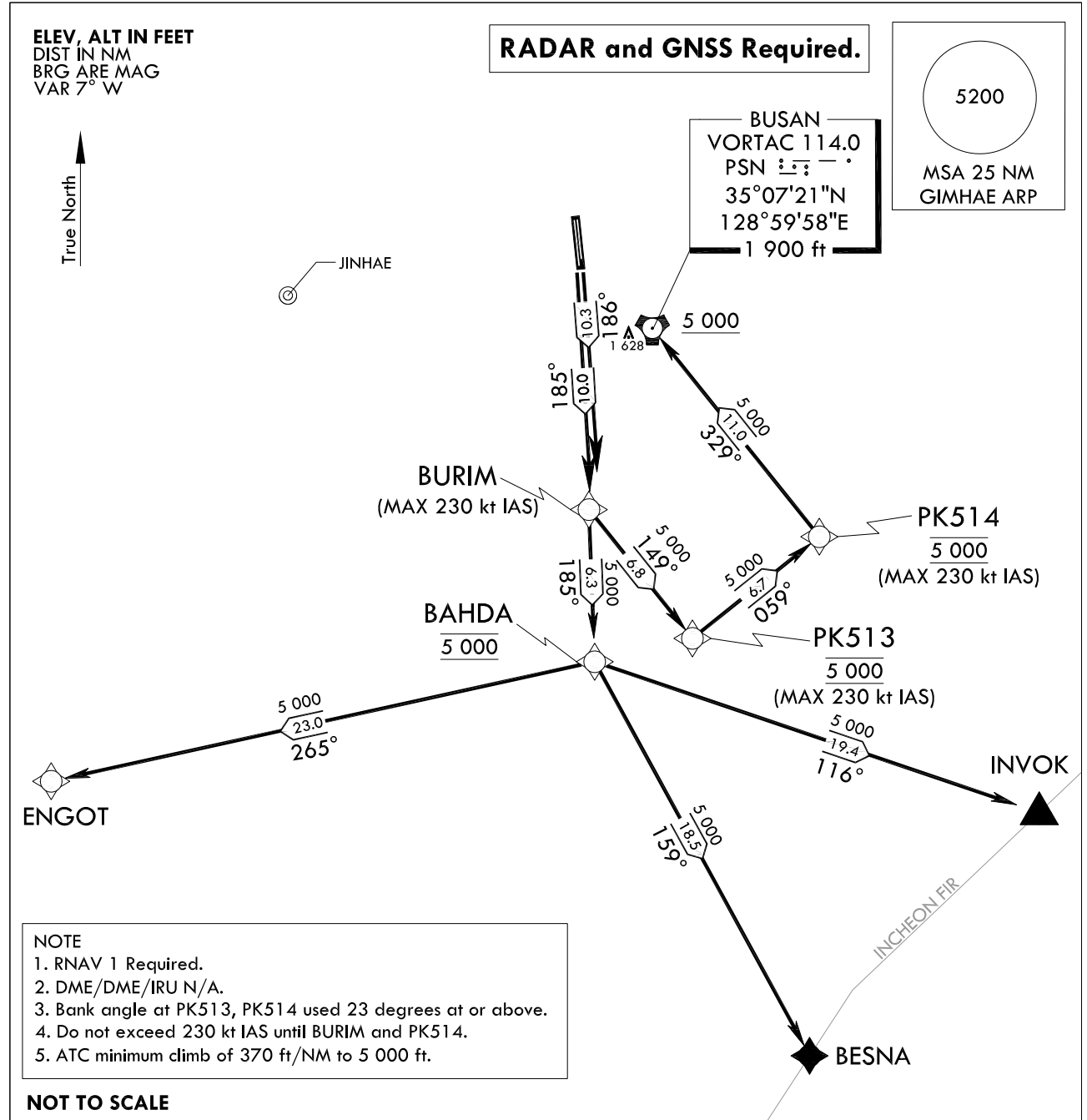
**STANDARD DEPARTURE  
CHART - INSTRUMENT(SID)**

TRANSITION ALT 14 000  
TRANSITION LVL FL 140

GIMHAE DEP 125.5  
363.8  
GIMHAE TWR 118.1  
118.450

**BUSAN/Gimhae Intl(RKPK)**  
**RWY 18L/R**  
**RNAV(GNSS) BURIM 3**

Note : Departure under U.S. TERPS.



**DEPARTURE ROUTE DESCRIPTION**

**BURIM 3 DEPARTURE**

TAKE-OFF RUNWAY 18R : Climb on course 185° to BURIM, thence.....

TAKE-OFF RUNWAY 18L : Climb on course 186° to BURIM, thence.....

..... via (TRANSITIONS routes) and climb assigned altitude by ATC.

**ENGOT Transition** : From BURIM on track 185° to cross BAHDA at 5 000 ft, then on track 265° to ENGOT.

**BESNA Transition** : From BURIM on track 185° to cross BAHDA at 5 000 ft, then on track 159° to BESNA.

**INVOK Transition** : From BURIM on track 185° to cross BAHDA at 5 000 ft, then on track 116° to INVOK.

**BUSAN(PSN) Transition** : From BURIM on track 149° to cross PK513 at 5 000 ft,  
then on track 059° to cross PK514 at 5 000 ft,  
then on track 329° to cross BUSAN(PSN) at or above 5 000 ft.

Change : Information of standard instrument departure procedure for RWY 18L/R(BURIM 2 → BURIM 3).

BUSAN/Gimhae INTL(RKPK)

RWY 18L/R

RNAV(GNSS) BURIM 3

## AERONAUTICAL DATA TABULATION

## Standard Instrument Departure Procedure Coding Tables

## Departure Route - RWY 18L

Serial Number	Path Descriptor	Waypoint Identifier	Fly-over	Course/Track °M(°T)	Distance (NM)	Turn direction	Altitude (ft)	Speed (kt)	Coordinates	VPA/ TCH	Navigation specification	Remarks
001	-	RWY 36R	-	-	-	-	-	-	35°10'10.10"N 128°56'26.14"E	-	RNAV 1	DER
002	CF	BURIM	-	185.79(178.33)	10.29	-	-	-230	34°59'52.3"N 128°56'48.1"E	-	RNAV 1	CG 370 ft/NM to 5 000 ft

## Departure Route - RWY 18R

Serial Number	Path Descriptor	Waypoint Identifier	Fly-over	Course/Track °M(°T)	Distance (NM)	Turn direction	Altitude (ft)	Speed (kt)	Coordinates	VPA/ TCH	Navigation specification	Remarks
001	-	RWY 36L	-	-	-	-	-	-	35°09'54.69"N 128°56'19.79"E	-	RNAV 1	DER
002	CF	BURIM	-	185.25(177.79)	10.03	-	-	-230	34°59'52.3"N 128°56'48.1"E	-	RNAV 1	CG 370 ft/NM to 5 000 ft

## RNAV BURIM 3 - ENGOT Transition

Serial Number	Path Descriptor	Waypoint Identifier	Fly-over	Course/Track °M(°T)	Distance (NM)	Turn direction	Altitude (ft)	Speed (kt)	Coordinates	VPA/ TCH	Navigation specification	Remarks
001	TF	BAHDA	-	185.24(177.77)	6.27	-	@5 000	-	34°53'34.4"N 128°57'05.8"E	-	RNAV 1	CG 370 ft/NM to 5 000 ft
002	TF	ENGOT	-	265.04(257.58)	22.96	-	+5 000	-	34°48'34.48"N 128°29'51.68"E	-	RNAV 1	-

## RNAV BURIM 3 - BESNA Transition

Serial Number	Path Descriptor	Waypoint Identifier	Fly-over	Course/Track °M(°T)	Distance (NM)	Turn direction	Altitude (ft)	Speed (kt)	Coordinates	VPA/ TCH	Navigation specification	Remarks
001	TF	BAHDA	-	185.24(177.77)	6.27	-	@5 000	-	34°53'34.4"N 128°57'05.8"E	-	RNAV 1	CG 370 ft/NM to 5 000 ft
002	TF	BESNA	-	158.81(151.34)	18.51	-	+5 000	-	34°37'18.0"N 129°07'51.0"E	-	RNAV 1	-

## RNAV BURIM 3 - INVOK Transition

Serial Number	Path Descriptor	Waypoint Identifier	Fly-over	Course/Track °M(°T)	Distance (NM)	Turn direction	Altitude (ft)	Speed (kt)	Coordinates	VPA/ TCH	Navigation specification	Remarks
001	TF	BAHDA	-	185.24(177.77)	6.27	-	@5 000	-	34°53'34.4"N 128°57'05.8"E	-	RNAV 1	CG 370 ft/NM to 5 000 ft
002	TF	INVOK	-	116.21(108.75)	19.38	-	+5 000	-	34°47'19.0"N 129°19'23.0"E	-	RNAV 1	-

## RNAV BURIM 3 - PSN(VORTAC) Transition

Serial Number	Path Descriptor	Waypoint Identifier	Fly-over	Course/Track °M(°T)	Distance (NM)	Turn direction	Altitude (ft)	Speed (kt)	Coordinates	VPA/ TCH	Navigation specification	Remarks
001	TF	PK513	-	148.71(141.24)	6.83	-	@5 000	-230	34°54'32.3"N 129°01'59.8"E	-	RNAV 1	CG 370 ft/NM to 5 000 ft
002	TF	PK514	-	058.76(051.29)	6.71	-	@5 000	-230	34°58'44.3"N 129°08'22.2"E	-	RNAV 1	-
003	TF	PSN	-	328.82(321.35)	11.03	-	+5 000	-	35°07'21.5"N 128°59'58.5"E	-	RNAV 1	VORTAC

Change : Information of procedure name(BURIM 2 → BURIM 3) and transition route(TOPAX → ENGOT).

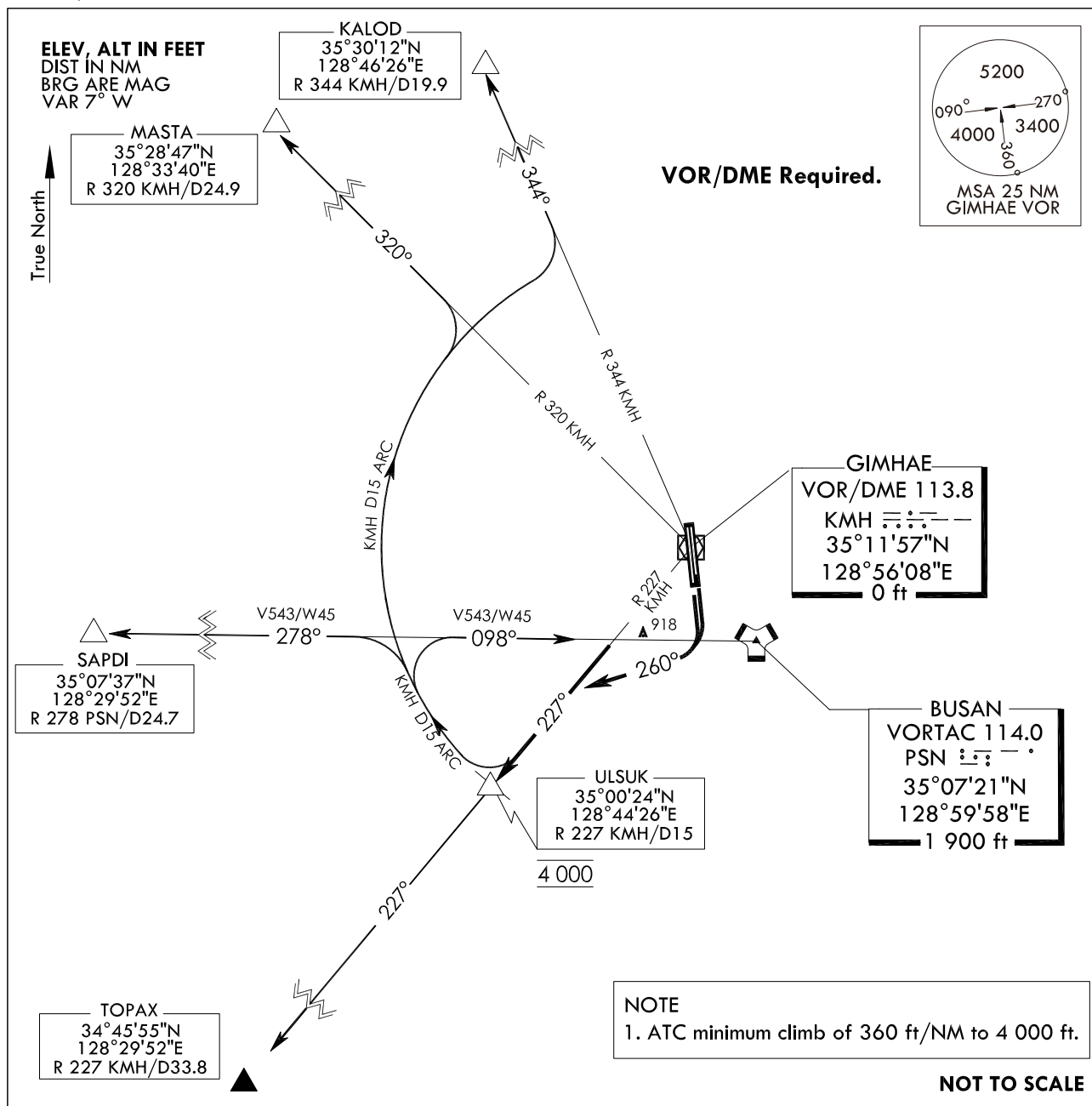
**STANDARD DEPARTURE  
CHART - INSTRUMENT(SID)**

TRANSITION ALT 14 000  
TRANSITION LVL FL 140

GIMHAE DEP 125.5  
363.8  
GIMHAE TWR 118.1  
118.450

**BUSAN/Gimhae Intl(RKPK)**  
**RWY 18L/R**  
**ULSUK 3**

Note : Departure under U.S. TERPS.



**DEPARTURE PROCEDURE DESCRIPTION**

**ULSUK 3 DEPARTURE**

**RUNWAY 18L/R :** Climbing right turn HDG 260° to intercept R 227 KMH and climbing 4 000 ft on R 227 KMH to ULSUK, thence.....  
.....via (TRANSITION), climb assigned altitude or as directed by ATC.

**KALOD transition :** Right turn and proceed via KMH 15DME arc to R 344 KMH, then via R 344 KMH to KALOD.

**MASTA transition :** Right turn and proceed via KMH 15DME arc to R 320 KMH, then via R 320 KMH to MASTA.

**SAPDI transition :** Right turn and proceed via KMH 15DME arc to R 278 PSN, then via R 278 PSN to SAPDI.

**BUSAN (PSN) transition :** Right turn and proceed via KMH 15DME arc to R 278 PSN, then via R 278 PSN to BUSAN (PSN).

**TOPAX transition :** R 227 KMH to TOPAX.

Change : Page control.

**OFFICE OF CIVIL AVIATION**

**AIRAC AIP AMDT 11/18**  
**Effective : 1600UTC 5 DEC 2018**

**INTENTIONALLY**

**LEFT**

**BLANK**

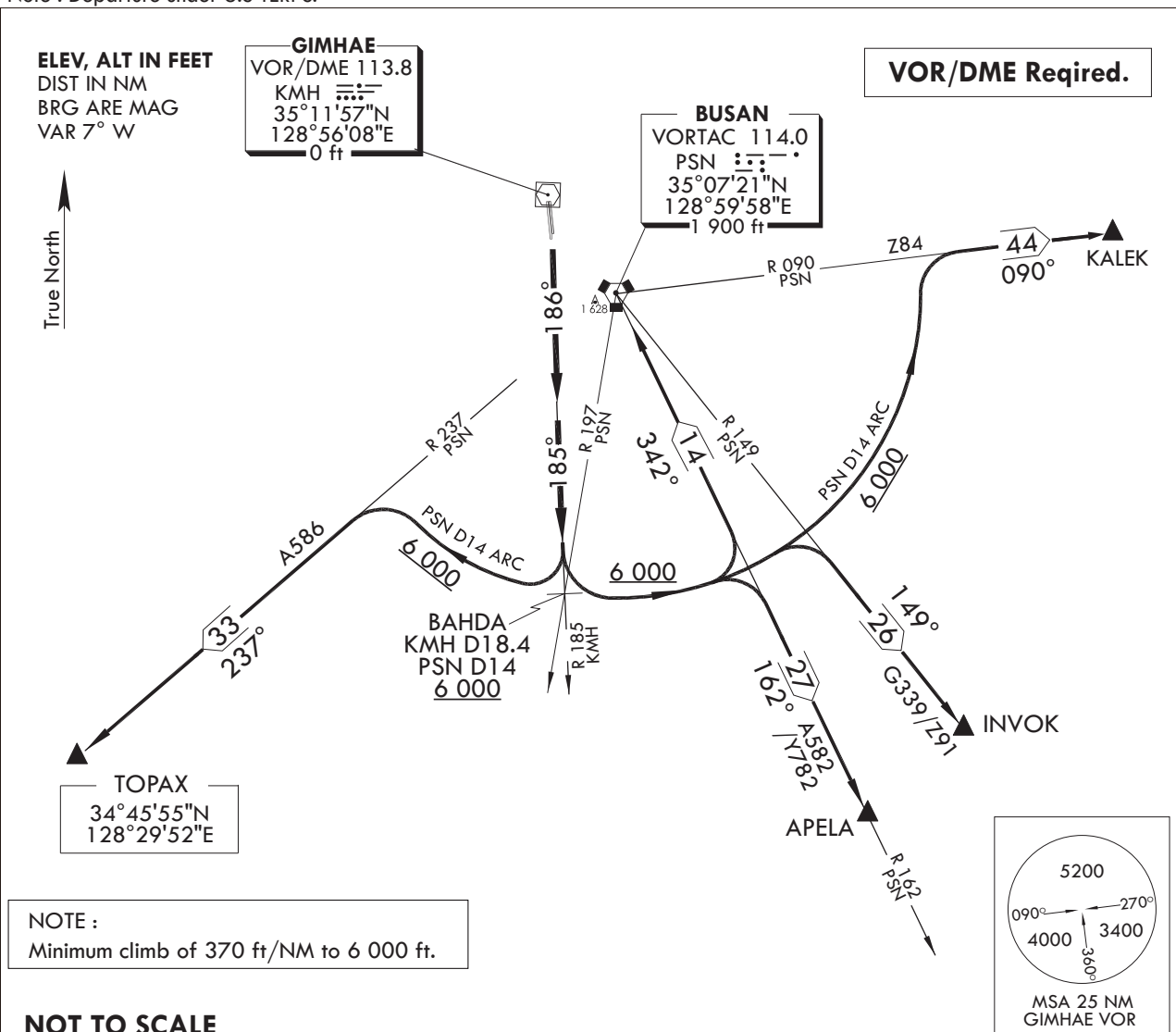
**STANDARD DEPARTURE CHART  
INSTRUMENT (SID)**

TRANSITION ALT 14 000  
TRANSITION LVL FL 140

GIMHAE DEP 125.5 363.8  
GIMHAE TWR 118.1 233.3  
118.450 236.6

**BUSAN/Gimhae INTL(RKPK)**  
**RWY 18L/R**  
**BAHDA 1**

Note : Departure under U.S TERPS.



**DEPARTURE ROUTE DESCRIPTION**

**BAHDA 1 DEPARTURE**

RWY 18L/R : Climb 6 000 ft via HDG 186° to intercept R 185 KMH to cross BAHDA at or above 6 000 ft, then via(TRANSITION routes) and climb assigned altitude by ATC.

**KALEK transition** : Left turn and proceed via the PSN D14 ARC to intercept R 090 PSN then R 090 PSN to KALEK.

**INVOK transition** : Left turn and proceed via the PSN D14 ARC to intercept R 149 PSN then R 149 PSN to INVOK.

**APELA transition** : Left turn and proceed via the PSN D14 ARC to intercept R 162 PSN then R 162 PSN to APELA.

**BUSAN(VORTAC) transition** : Left turn and proceed via the PSN D14 ARC to intercept R 162 PSN then R 162 PSN to BUSAN VORTAC(PSN).

**TOPAX transition** : Right turn and proceed via the PSN D14 ARC to intercept R 237 PSN then R 237 PSN to TOPAX.

Change : Withdrawal of Y579.

**INTENTIONALLY**

**LEFT**

**BLANK**